



PTARMIGAN PTRAILS
CONSULT :: DESIGN :: BUILD



Godsey Ridge Trail System

City of Red Bank RFP 25-0901

Company Profile & Bid Documents



PTARMIGAN PTRAILS, LLC
OREGON CCB#: 215474
UTAH#: 12238663-5501
907-841-0114
eddie@ptarmiganptrails.com



PTARMIGAN PTRAILS
CONSULT :: DESIGN :: BUILD



Table of Contents

1. Experience & Firm Information	2
1.1. Project Team Organizational Chart	2
1.2. Key Personnel, Experience and CV's	3
1.3. Relevant Project Experience	4
2. Resources	16
3. Project Collaborative Approach & Schedule	18
4. Proposed Project Cost	23
5. Project References	24

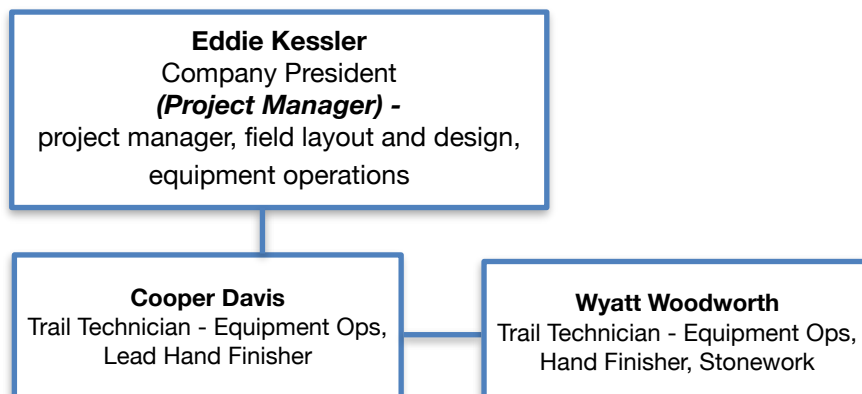


1. Firm Information

Ptarmigan P Trails, LLC is a nationally recognized trail construction company and proud member of the national Professional Trail Builders Association. We are an Oregon and Utah Limited Liability Corporation who has recently expanded to the southeast region with new headquarters in the Chattanooga, Tennessee area. Our firm was founded in 2009 with a mission to provide fun, sustainable, aesthetically pleasing, and user specific trails. We are a company of riders and trail users incorporating progressive design and current best management practices for every project we take on. Working with peers across the nation, we strive to stay up to date with current industry trends.

We have worked extensively in the wildland/urban interface in conditions and soils similar to the Godsey Ridge site, our team appreciates and understands the complex nature of the landscape, soils, and ecosystem services that are present on the site. Ptarmigan P Trails will use our past experiences to make this project a success. We believe more people on trails and more people on bikes make for better communities. Our portfolio speaks to our success in creating lasting relationships with clients and organizations. We've included project examples that are generally multi-use and adaptive oriented. If the selection team has questions about mountain bike optimized trails and systems, please don't hesitate to contact us and we will be happy to provide more examples.

1.1. Project Team Organizational Chart





1.2. Key Personnel

Eddie Kessler - Company President Ptarmigan Ptrails LLC

Project Role: Project Manager, trail design and layout, construction operations

Eddie has owned Ptarmigan Ptrails since 2011 and has been building trail since 2006. He manages all trail construction and design operations for Ptarmigan Ptrails, leading on the ground equipment operations, and providing detailed project management. Eddie holds a B.A in American Policy with an emphasis on Environmental Studies from the University of Central Florida, and a Masters of Outdoor Environmental Education from Alaska Pacific University. He has worked professionally on trails all across the nation from Arkansas to Alaska. Eddie believes getting people into the outdoors is the best way to create a sense of connection within our natural lands and the communities we live in.



He recently moved with his wife Erin and daughter Evie to the north side of Red Bank, TN. He has served on the board of Envision Mat-Su, Valley Mountain Bikers and Hikers, and was a founding member of the Wild Coast Trails Association (formally WRCMBA) in 2015. He also served on the local 2CJ school board and Port Orford Parks and Recreation Commission.

Project duties:

- Facilitation of client/contractor meetings
- Field Design and Project Administration
- Equipment Operations
- Review of Design Documents



PTARMIGAN PTRAILS
CONSULT :: DESIGN :: BUILD



Cooper Davis - Operator and Trails Technician

Project Role: Equipment operations, dry masonry, and tread finish

Cooper joined Ptarmigan P Trails in 2023. Cooper began his trail career volunteering with WRCMBA in Coos County at Whiskey Run Trails, and fell in love with trails while racing on the local NICA team.

Cooper has an eye for detail and although he has moved into a crew supervisor role, he remains our top hand finisher on the team. He has worked throughout Oregon and Utah with P Trails. We count on him to assess quality and needs when delivering finished trail.

Cooper has been a P Trails team member on the following projects:

- South Eugene Meadows Trail- Construction
- Hundred Acre Wood- Construction Phase 1
- Lavern Park Trail- Construction
- Upper Table Rock Trail- Restoration
- Wildhorse Trails System- Design
- Cascade Locks Trail- Construction Phase 1
- Cliffrose Trail- Construction (Phase 2 and Phase 2.1)
- Dollar Mountain Trail- Construction Phase 1
- Gnomewrecker Trail at Whiskey Run- Rebuild





PTARMIGAN PTRAILS
CONSULT :: DESIGN :: BUILD



Wyatt Woodworth: Operator and Trail Technician

Project Role: Excavator Operations, Materials Expediting, Hand Finishing

Wyatt joined with Ptarmigan P Trails in 2023. Like other staff on our team, Wyatt's intro to trail work came from his dedication to Whiskey Run Trails and racing on the South Coast Composite NICA team. In addition to his work at P Trails, he has worked on coastal ranches, started his own his own mountain bike rental business, and is pursing membership into the Longshoreman's union.



During his time at Ptarmigan P Trails, Wyatt has developed into one of our most dependable human assets. We value Wyatt as a team leader and look to his experience and skills for crew management, finish tread, and logistics.

Wyatt has been a P Trails team member on the following projects:

- Winchester Trails- Construction
- Game Lake Trail- BAER contract, Restoration
- Southwest Oregon Community College- Crew Manager and Trail Construction
- South Eugene Meadows Trail- Design, Build
- Dollar Mountain Trail- Construction Phase 1
- Cliffrose Trail- Construction Phase 2.1
- Cascade Locks Trail- Construction



Firm Workload

Construction of *Godsey Ridge Trail System* will begin, weather dependent, in late 2025. Next best available work window February to April, 2026.

PTRAILS staff will be dedicated to the development of the *Godsey Ridge Trail System* project from December 1, 2025 to May 1, 2026.

Official contract closing dates are listed in the following table:

Ptarmigan P trails is currently under contract on the following projects:

PROJECT	CONTRACT CLOSE	TYPE
Dollar Mountain Trails	11/15/2025	Final Design and trail construction
Suzanne Arlie Mountain Bike Park and Trails - Quality Assurance	6/1/2026	Quality Assurance
South Eugene Meadows Design & Construction	6/1/2026	Trail Design, Construction
Whitetail Tree Farm Trails Design/Build	10/1/2026	Ongoing Trail Design and Construction



1.3. Recent Project Examples:

Thurston Hills Natural Area (Phase 1 Construction, Phase 2 Design)

Contact: Fraser MacDonald, Former Natural Resource Manager

Info: 541-736-4051, FraserM@willamalane.org

Participating Stakeholders: Willamalane Parks and Recreation, Lane County, Oregon Parks and Recreation Department, Bonneville Power Administration, City of Springfield, Disciples of Dirt, Bureau of Land Management

In 2020, Thurston Hills was awarded a CRT Achievement Award for Public-Private Partnerships Enhancing Public Lands Access and Use from American Trails. Our firm was hired to help Willamalane Parks and Rec develop the first and second phases at Thurston Hills Natural Area, a suburban multi-use wilderness park in the Eugene/Springfield area. For Phase I, we finalized design details with WPRD staff on all trail alignments throughout the project site and moved on to construction of what is now called Mossy Maple, Yew Haw Trail, and a full design/build of Acer Spades, a beginner-intermediate downhill flow trail. This project created a trail system that provides a nature escape with dedicated native surface routes for hikers and mountain bikers. The design provides a shared use, Universal Access compliant trail that can be used as either climbing trail for mountain bikers or a hiking path for users.



WPRD again hired Ptarmigan P Trails in 2019 to design 4 additional miles on the south side of Thurston Hills. WPRD trusted our approach and expertise to collaboratively design new trail through complex hydric soils, areas containing rare native plant species, and along shared property managed by a separate federal agency (Bonneville Power Admin). Thurston's challenges represented a learning opportunity that can be applied to many projects within wildland/urban interface of the Willamette Valley.



PTARMIGAN PTRAILS
CONSULT :: DESIGN :: BUILD



Thurston Hills Project Photos:





PTARMIGAN PTRAILS
CONSULT :: DESIGN :: BUILD



Upper Table Rock Trail Restoration and Reroutes - BLM Medford Office (2023)

Location: Medford, OR

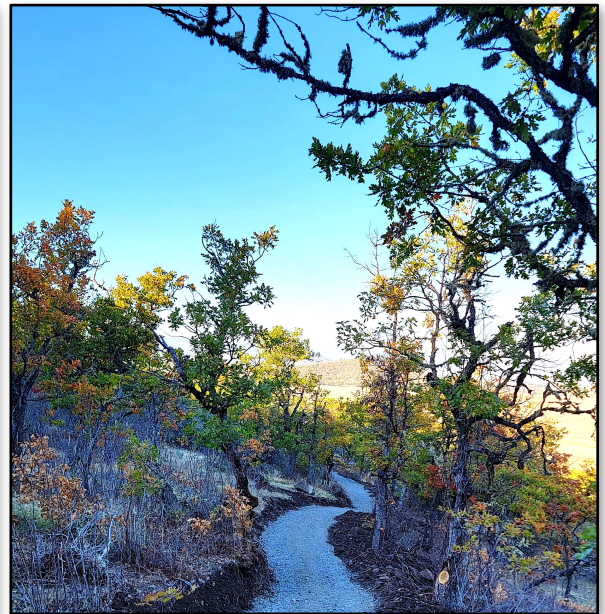
Contact: Nick McDaniels- Recreation Planner

Contact Info: 541-619-4743, nmcdaniel@blm.gov

Participating Stakeholders: Bureau of Land Management, International Mountain Bicycling Association

Similar to rocky areas throughout Red Bank, Upper Table Rock consists of a basalt butte with significant outcroppings of bedrock, dominated by grassy meadows and oak woodlands along the lower elevations. The Bureau of Land Management worked with our team to repair sections and construct 1.5 miles of reroutes on the iconic Upper Table Rock trail near Medford, Oregon. Working with BLM archaeologists and field staff we carefully constructed and adjusted the corridor as needed to create a trail that was more resilient to the freeze-thaw cycles of Rogue Valley winters. The existing trail had also seen a significant increase in use over the last decade.

PTRAILS utilized our expertise in universal access and improved gravel trails to create a contour curvilinear trail, that didn't feel like a sidewalk on the mountain. The project included many logistical hurdles including a single staging area, steep side-slopes, bedrock outcrops and areas of serious cultural significance. We are proud to have been a partner on this project.





PTARMIGAN PTRAILS
CONSULT :: DESIGN :: BUILD



Chehalem Ridge Nature Park - METRO (2020-2021)

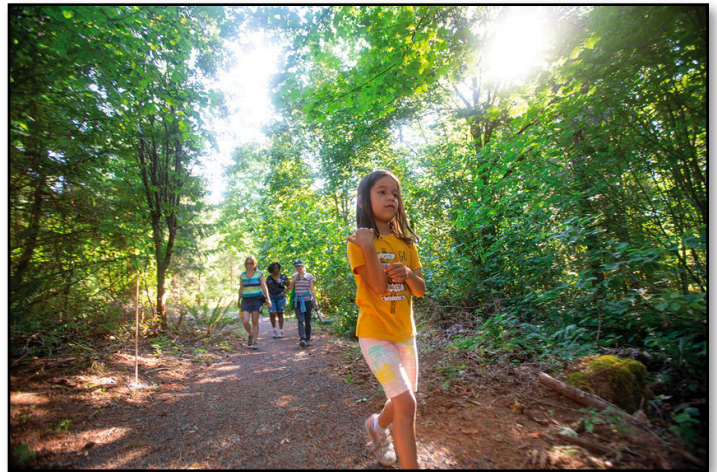
Location: Gaston, OR

Contact: Karen Vitkay - Metro Senior Regional Planner

Contact Info: karen.Vitkay@oregonmetro.gov, 503-758-4878

Participating Stakeholders: METRO, Oregon Parks and Recreation Department, Trailkeepers of Oregon, Washington County

Ptarmigan P Trails constructed over 7.5 miles of new trail in this multi-use system and worked with METRO to adjust and realign 1/3 of the natural surface and AAA trails (All Ages and Abilities). CRNP now provides a unique and beautiful nature experience, with interpretive, aerobic, and wilderness experiences for residents on the west side of the METRO area. The majority of the trail system was designated for hiking and biking, while a separate area also included design and management standards for equine users. Due to the complexity of permitting compliance and construction process, PTRAILS also provided ongoing design services to METRO in order to finalize route alignments and provide problem solving for real world trail concerns. During the construction process, our team worked with METRO agency and contractor peers to alleviate concerns in design, conservation needs, trail connectivity, and potential trail impact issues that arose when bringing the trail design to life. We were honored to be a part of this significant project that helps bring new recreational trails to an underserved area of the Portland metro community.





PTARMIGAN PTRAILS
CONSULT :: DESIGN :: BUILD



Chehalem Ridge Nature Park Example Photos:





PTARMIGAN PTRAILS
CONSULT :: DESIGN :: BUILD



Hundred Acre Wood Trails Design (2021) and Construction (2023) City of Coquille

Location: Coquille, Oregon

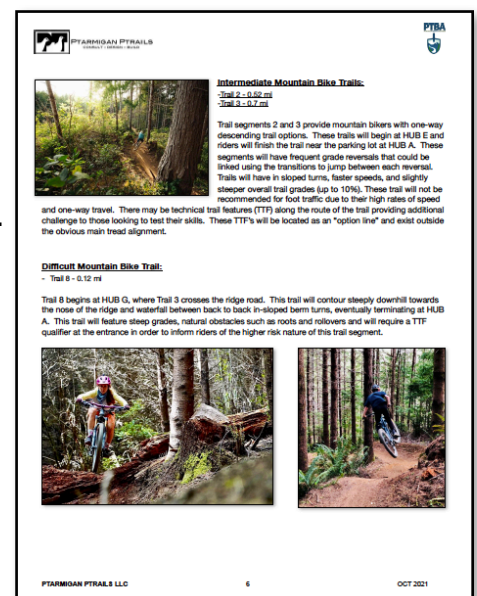
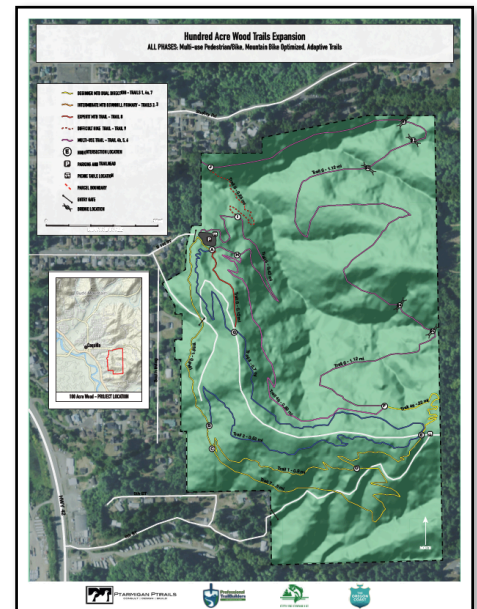
Contact: Mark Denning, Public Works Director

Contact Info: 541-396-4336, mdenning@cityofcoquille.org

Participating Stakeholders: City of Coquille, Coos County, Oregon Parks and Recreation Department, Coquille Tribe, Wild Coast Trails Association, Bandon Dunes Charitable Foundation, Judith Anne Morgan Foundation, Oregon Coast Visitors Association, First Community Credit Union

The Hundred Acre Wood Trails was a project proposed by the City of Coquille for a regional trail system and an improved parking area on 144 acres of city-owned timber property located within city limits. Ptarmigan P Trails designed and was awarded the competitive contract for the first phase of construction. This included approximately 5 miles of hiking, mountain biking, and multi-use trails. A parking area with a plumbed restroom, ADA parking, electric vehicle charging, a picnic area, and a pavilion were constructed by a separate contractor..

This project is relevant to City of Red Bank's work due to the trail connections through infrastructure ROW's and directly into the urban/wildland interface. Deliverables included trail design and field layout and the creation of detailed trail narratives and management objectives. The deliverable document will be used to guide future construction RFP creation and to sell the project to potential funders.

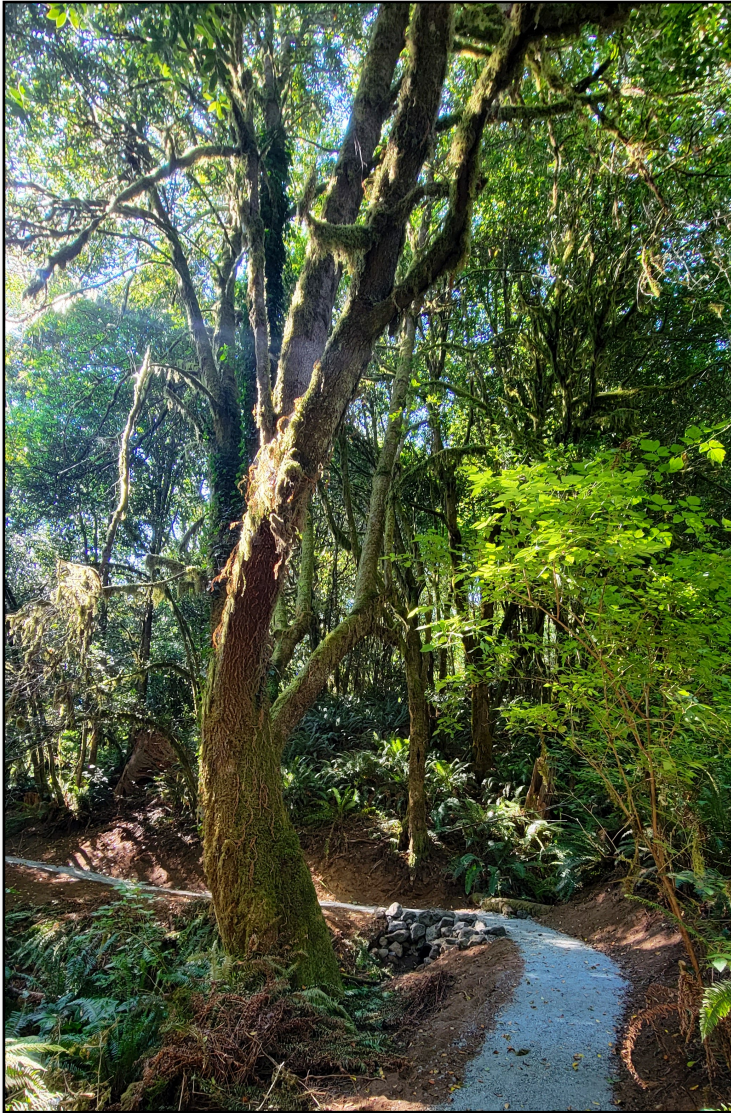




PTARMIGAN PTRAILS
CONSULT :: DESIGN :: BUILD



Hundred Acre Wood Photos:





PTARMIGAN PTRAILS
CONSULT :: DESIGN :: BUILD



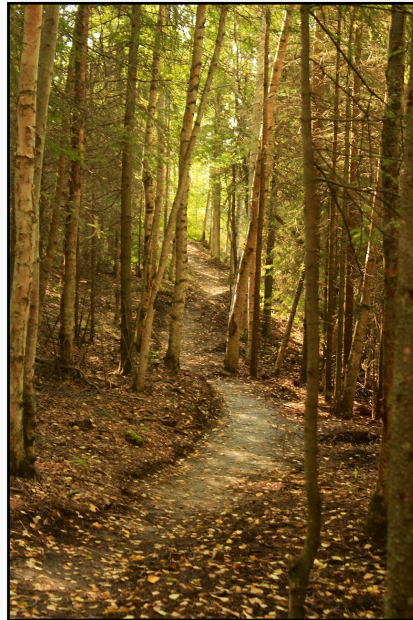
Municipality of Anchorage & Anchorage Park Foundation (2010-2017)

Anchorage, AK 99501

Contact - Joshua Durand (current director, former parks planner)


Contact info: 907-343-4427, joshua.durand@anchorageak.gov

Ptarmigan P Trails LLC was hired by Anchorage Parks and Recreation, through the Anchorage Park foundation to manage and supervise the Youth Employment in Parks program (YEP) as well as design and construct additional trail projects throughout the Anchorage area. YEP is a 10-week summer program that hires Anchorage teens to gain job skills through park improvement projects such as natural resource management, building trails, and restoring stream banks. YEP was designed to positively engage a new generation of diverse young leaders as conservation stewards of public lands through meaningful job training, employment, education, environmental awareness, and leadership skills. Our firm worked with city staff, landscape architects, and engineers to design and implement a trail construction program through the Anchorage Bowl and surrounding communities. This program utilized a combination of youth service corps members with management by our professional team. Ptarmigan P Trails was responsible for project success. We were under contract for crew management, construction quality control, and final construction finish. The majority of the trail projects provided neighborhood and community access adjacent to or through existing public green spaces, offering residents or visitors additional recreation and transportation options without traveling on public roadways.







Additional Relevant Trail Design and Construction Experience

 PTARMIGAN PTRAILS FULL SUITE PROJECTS	CONSULT <ul style="list-style-type: none"> • Non-profit leadership • Grants & Funding • NEPA, SHPO & ESA • Supporting access • Technical Trainings 	DESIGN <ul style="list-style-type: none"> • Agency Master Planning • Multi-modal designs • Assessments & TMO's • Bike park design • Constructions Docs 	MANAGE <ul style="list-style-type: none"> • Project Management • Clients Representative • Budget Expediting • Crew Management 	BUILD <ul style="list-style-type: none"> • Universal & Adaptive • MTB Optimized • Multi-Use Trails • Heavy Trail Restoration • OHV Trails
NEWPORT TRAIL STEWARDS	✓	✓	✓	✓
SEWARD COMMUNITY BIKE PARK	✓	✓	✓	✓
7TH ST BIKE PARK JOHN DAY	✓	✓	✓	✓
HUNDRED ACRE WOOD	✓	✓	✓	✓
WHISKEY RUN TRAILS	✓	✓	✓	✓
THURSTON HILLS NATURAL AREA	✓	✓	✓	✓
ECOLA TO INDIAN OPRD	✓	✓	✓	✓
WINCHESTER OHV RESTORATION	✓	✓	✓	✓
MIRROR LAKE TRAILS - CMBR	✓	✓	✓	✓
GOV PEAK REC AREA TRAILS	✓	✓	✓	✓
KINCAID PHASE II - STA	✓	✓	✓	✓
TSALTESHI TRAILS	✓	✓	✓	✓
PALMER BIKE PARK & TRAILS	✓	✓	✓	✓
SPRINGVILLE BIKE PARK	✓	✓	✓	✓



 PTARMIGAN PTRAILS PLANNING PROJECTS	CONSULT <ul style="list-style-type: none"> • Non-profit leadership • Grants & Funding • NEPA, SHPO & ESA • Supporting access • Technical Trainings 	DESIGN <ul style="list-style-type: none"> • Agency Master Planning • Multi-modal designs • Assessments & TMO's • Bike park design • Construction Docs 	MANAGE <ul style="list-style-type: none"> • Project Management • Clients Representative • Budget Expediting • Crew Management 	BUILD <ul style="list-style-type: none"> • Universal & Adaptive • MTB Optimized • Multi-Use Trails • Heavy Trail Restoration • OHV Trails
COTTONWOOD EASTLANDS	✓	✓		
SUZANNE ARLIE MTB PARK	✓	✓		
WILDHORSE TRAILS SYSTEM*	✓	✓	✓	
SOUTHWEST CANYONS TRAILS*	✓	✓	✓	
SWOCC CAMPUS TRAILS	✓	✓	✓	
SKEETAWK TRAILS	✓	✓		
LAMOILLE SUMMIT TRAILS*	✓	✓		
SAM HOUSTON NF ASSESSMENT*	✓	✓		
NORTH COAST TRAIL ASSESSMENT	✓	✓		
CAPE SEBASTIAN TRAILS PLAN	✓	✓		
SUNRISE PARK MUTI USE TRAILS	✓	✓		
NEWMAN MEMORIAL BIKE PARK	✓	✓		
DOUGLAS COUNTY OHV PARK	✓	✓		
SADDLE MTN ASSESSMENT	✓	✓		
*Project on Federal Land				



 PTARMIGAN PTRAILS CONSTRUCTION PROJECTS	CONSULT <ul style="list-style-type: none"> • Non-profit leadership • Grants & Funding • NEPA, SHPO & ESA • Supporting access • Technical Trainings 	DESIGN <ul style="list-style-type: none"> • Agency Master Planning • Multi-modal designs • Assessments & TMO's • Bike park design • Constructions Docs 	MANAGE <ul style="list-style-type: none"> • Project Management • Clients Representative • Budget Expediting • Crew Management 	BUILD <ul style="list-style-type: none"> • Universal & Adaptive • MTB Optimized • Multi-Use Trails • Heavy Trail Restoration • OHV Trails
RAVINE TRAIL - CRYSTAL BRIDGES		✓		✓
MT. FITZGERALD TRAILS		✓		✓
CASCADE LOCKS TRAILS*		✓		✓
COYOTE WALL TRAIL*		✓		✓
CHEHALEM RIDGE NATURE PARK		✓		✓
NEWELL CREEK CANYON PARK		✓		✓
MOUNTAIN OF THE ROGUE*	✓	✓		✓
TABLE ROCK RESTORATION*		✓		✓
LOWER ROGUE RIVER TRAIL*		✓	✓	✓
GUTROBBER - ALSEA FALLS*				✓
BUTTERNUT BIKE PARK				✓
BELLA VISTA BACK 40 TRAILS				✓
IRON HILLS TRAIL SYSTEM*				✓
16 MILE DOWNHILL TRAIL		✓		✓
*Project on Federal Land				



2. Resources

Ptarmigan P Trails will provide a 4 person crew with weekly or biweekly site visits by construction project manager. All PTRAILS crew members are operators and hand finishers. This crew also includes employees who specialize in rock work and dry-stone masonry.

Kubota U27 -Size Class 6500 lbs (Trail 4614)

- Maximum Track Width 52"
- This equipment should be limited to trails with treads consistently maintained at 48" width, or to areas where major lift and turnpiking is required
- Limited to Road to Trail Conversion areas
- Will be used with 24" digging bucket and 32" Tilt Bucket



<6500 lbs Size Class - Hot Springs,

3. CAT302CR, Kubota U17 Size Class <4500 lbs

- Maximum Track width 48", Minimum 32"
- These models can be used throughout the entire trail project, but are best suited to narrower trails and naturalized technical trails
- Will be used in conjunction with Hydraulic-Tilt Coupler



<4500 lbs Size Class - Dollar MTN, OR

4. Rented Equipment

- (2) SC75 Canycom Tracked Power Wheelbarrow (36" Width)
- (2) Vermeer S925 or CX160 Mini Skid Steer or Similar
- 48" Roller Compactor on low grade sections
- Credit Accounts with United, Sunbelt, Herc, and Star Rentals

5. Additional equipment

- BFP602 Canycom Tracked Power Wheelbarrow (32" Width)
- TW200 OHV for fuel and site access
- Yamaha Muro full power E-bike for site access
- 24" Plate compactor
- 1997 Mitsubishi Kei Truck for supply and water transfer



<48" width Powered Wheelbarrow



3. Project schedule and collaborative approach

The Godsey Ridge Trails will provide a significant piece of trail infrastructure and connective link for the Red Bank community. Our team has experience working in the region and on similar large scale projects. Ptarmigan P Trails understands the processes and intention of desired trail experiences and quality expectations created within the Godsey Ridge design. Our team's focus is to provide a quality finished product that meets the designed user expectation - a multi-use experience with an emphasis on conservation and sustainable land use ethic.

Ptarmigan P Trails has constructed and designed trails in the wildland/urban interface since our inception. In our early years working with the Municipality of Anchorage and the Anchorage Park Foundation, PTRAILS designed and installed miles of boardwalk and improved surface trails throughout the Anchorage Bowl. This early work and understanding of community-based needs has led our team to successful relationships with clients such as Willamalane Parks and Recreation District, Portland METRO, the US Forest Service, Bureau of Land Management, Oregon State Parks, Greater Zion Tourism, Oregon Coast Visitors Association, and local municipalities throughout Oregon and the inter-mountain west.

PTRAILS has bid the project with an itemized breakdown that includes a price component for trail construction, and a breakout for ALTERNATE Bids.

ALTERNATE items A1 - A5 pricing are open to negotiation. Ptarmigan P Trails staff would like to discuss city intent, community desire, and include local trail organizations' comments regarding the vision for these locations. Portions of HUBS (A4/A5) are often incidental to the trail construction process, but additional design and experience detail will ensure the construction of these items matches the city's vision for these locations.



Project Schedule:

Ptarmigan P Trails LLC expects construction to take approximately 35 works days or about 50 calendar days (depending on soil and weather conditions).

- Project Start Date Dec 1, 2025
- Crews will work 4 day work weeks
- Work hours will be Mon-Thurs from 7:30am until 6pm
- Hours may change due to weather events and winter work windows (spring work window preferred)
- No weekend or holidays unless approved by Red Bank staff and PTrails administration

OPTIMAL TIMING FEB 2026 - APRIL 2026

BI WEEKLY (15 DAYS)	1	2	3	4	5	6
ITEM						
Mobilization	M*					M
ITEM 1	G+	T^				
ITEM 2		G, T				
ITEM 3		G, T	G, T	G, T		
ITEM 4				G, T		
ITEM 5					X	X

*** M = Mobilization, + G = Grubbing, ^ T = Tread Finish, ** P = Punccheon, X = ALT ITEMS**

& - This schedule is tentative. We cannot predict partial or shutdown days on the project - therefore our proposal team has not outlined them specifically. If chosen as awardee, our team and COE can detail project expectations and review potential shutdowns in detail. Contingency plans have been included in our bid pricing.

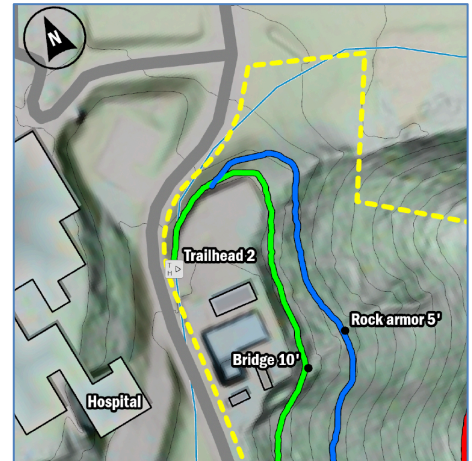


ITEM 1 - Begin work on Green Trail (2a) at Trailhead 2

Staff time: 7 Work Days

Ptarmigan Ptrails staff will mobilize to Godsey Ridge project site. Project manager and crew will walk through the site and become oriented with the project area.

Crews will begin staging equipment and begin construction of Green Trail. PTRAILS crew will begin grubbing (G) from the #2 North Trailhead and work south along the designed trail alignment. Equipment will be mobilized around bridge sites following grubbing. Grubbing excavator will complete grubbing of gravel tread tray to Trailhead 1.

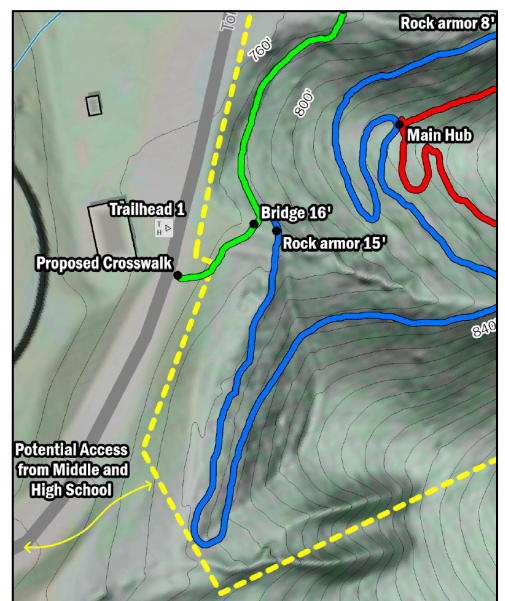


Import and finish of aggregate (T) onto green trail will coincide with bridge construction, working in a north to south fashion. Bridges will be built in north to south order (2b, 2c, 2d, 2e). Final finish work and compaction will occur following bridge construction.

ITEM 2 - Begin Blue Trail following Green Trail (G & T)

Staff time: 3 work days

As our crew completes the (T) phase of ITEM 1, operator and support team will mobilize equipment to staging the south side of the Blue Trail (Bid item 3) and commence both the (G) and (T) phase in a south to north in the direction from location. This includes flagging and armoring the 15' length section near bridge 2e. Blue Trail construction will pause when team reaches the "Main Hub" linking the blue trail and red trail.





PTARMIGAN PTRAILS
CONSULT :: DESIGN :: BUILD

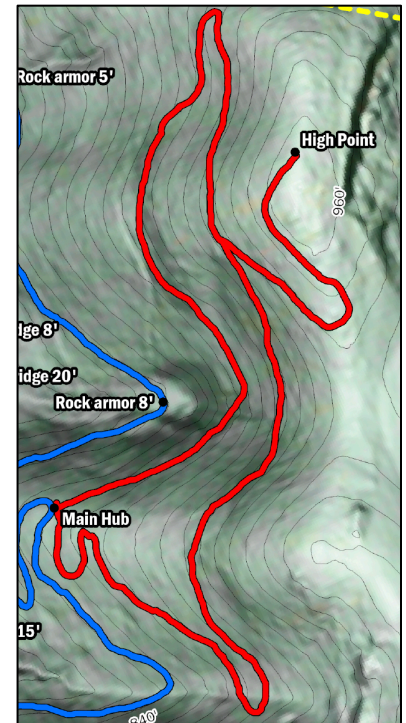


ITEM 3 - Begin construction of Red Trail

Staff time: 10-12 work days

After the build team reaches the “Main Hub,” the crew will commence constructing the Red Trail (bid item 4a), starting from the south side and working north to the “High Point.” The construction team will utilize 2 mini excavators to complete grubbing (G) and tread finish (T) in a linear fashion. A single excavator will work up to the high point and finish tread back south.

While both excavators finish (G) and (T) on the Red Trail loop, hand team will complete stone stair steps (Bid item 4b). Following completion of the loop back to the “Main Hub”, excavators and build team will continue north on blue trail (bid item 3)



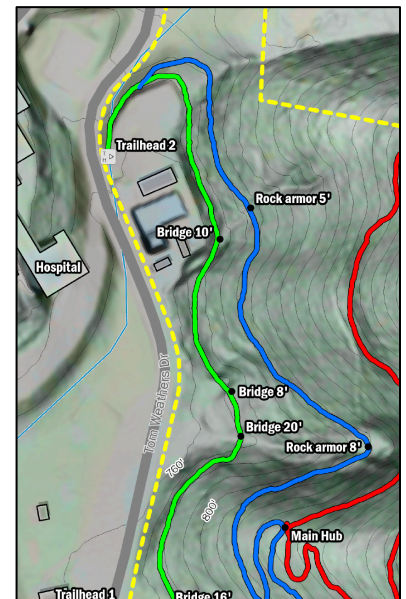
ITEM 4: Finish Construction of Blue Trail

Staff time: 6-8 work days

The final trail construction phase will encompass constructing the remaining footage of the Blue Trail (bid item 3). PTrails crew will work from the “Main Hub”, heading north and completing both (G) and (T), exiting out of Trailhead 2. Any impact to the Green Trail (bid item 2a) will be repaired before opening. Flagging and armoring of small sections of trail are incidental to linear foot cost of Blue Trail. These material and labor costs are included in bid item 3.

ITEM 5: Installation of Kiosks and Signs

Installation of signs, archways and kiosks (A1, A2, A3) will occur following completion of trail segments. Ptarmigan PTrails is open pricing and design options negotiations.





4. Proposed Project Cost

Below you will find the proposed price proposal for the Godsey Ridge Trail System

ITEM	PROJECT ID	Description	Unit Quantity	Cost/Unit	BID AMOUNT
1	Mobilization		1	1700	\$1,700.00
2a	Green Trail	Aggregate surfaced trail per linear ft	1790	\$18.65	\$33,383.50
2b	Bridge 1	72" x 120" Bridge per unit	1	\$2,950.50	\$2,950.50
2c	Bridge 2	72" x 96" Bridge per unit	1	\$2,257.00	\$2,257.00
2d	Bridge 3	72" x 240" Bridge per unit	1	\$3,438.75	\$3,438.75
2e	Bridge 4	72" x 192" Bridge per unit	1	\$3,025.00	\$3,025.00
3	Blue Trail (Surfaced & Native)	Imported Flagstone - no guarantee of rock on site, open to negotiation	3740	\$9.25	\$34,595.00
4a	Red Trail (Natural)		3510	\$8.75	\$30,712.50
4b	Rock Steps*	Imported Field stone - no guarantee of rock on site, open to negotiation	2	\$4,025.00	\$8,050.00
				SUBTOTAL TRAIL	\$120,112.25
ALT BIDS					
A1	Trail Signage install	Install of Carsonite Posts	11	\$194.25	\$2,136.75
A2	Entryway Arch	Design and Install of Post and beam Archway - Open to price negotiation depending on design and material discussion with City	2	\$2,250	\$4,500.00
A3	Kiosk	Design and Install of 2 Kiosks - Open to price negotiation depending on design and material discussion with City	2	\$4,500.00	\$9,000.00
A4	Hub Seating Area	Open to design build discussion - not enough information or community context			
A5	High Point Seating Area	Open to design build discussion - not enough information or community context			
				ALT BIDS SUBTOTAL	\$15,636.75

1. *ITEMS 2a, 3a and 4a* will be billed per linear foot unit completed (this includes grubbing, gravel and tread finish)
2. *ITEMS 1, 2b, 2c, 2d, 2e, and 4b*, will be billed as lump sum or as percentage completed
3. Trail progress will be billed at least once every thirty days and no more than once every fifteen days (15)



PTARMIGAN PTRAILS
CONSULT :: DESIGN :: BUILD



4. Professional References

1. **Shane Wilson - Trailhaus**
Recreation Planner and Project Manager
Info: 541-490-8048, Shane.wilson@trail.haus
2. **Josh Hopkins - Parks Superintendent**
City of Grants Pass
Info: 541-450-6160, jhopkins@grantspassoregon.gov
3. **Ryan Turner - Parks Planning Analyst**
City of Eugene
Info: 541-852-3389, turner@eugeneor.gov
4. **Mark Denning - Public Works Director**
City of Coquille
Info: (541) 551-5059, mdenning@cityofcoquille.org
5. **Marie Simonds - Executive Director**
Bandon Dunes Charitable Foundation
Info: (541) 404-8992, msimonds@bandondunesgolf.com
6. **Karen Vitkay - Parks Planner**
METRO
info: (503) 758-4878, karen.vitkay@oregonmetro.gov
7. **Fraser MacDonald - Former WPRD Natural Resource Manager**
Willamalane Parks and Rec District (Former Employee)
Info: (402) 304-3512

Anti-Collusion Statement
Include in Proposal Packet along with Attachment A, B, & C

Contractor Name: Ptarmigan Ptrails LLC

Address: Current Mail: PO Box 649
Port Orford, OR 97465
Physical: 4947 Old Trail
Red Bank, TN 37415

Phone: 907-841-0114

E-Mail: eddie@ptarmiganptrails.com

Date: October 5th, 2025

Greetings:

(I/We) do hereby declare that (I am/we are) the only person, firm or corporation interested in this proposal, and that no other person, firm or corporation than the one herein named has any interest herein or in the contract proposed to be taken; that it is made without any connection with any person, firm or corporation making proposal for the same work, and that it is in all respects fair as to each item proposed and as to the proposal as a whole and without collusion or fraud: also that no officer or employee of the City of Red Bank, who is by law excluded from participating therein, is directly or indirectly interested herein, or in the furnishing of the supplies, or doing the work to which it relates, or in furnishing surety, or in any portion of the profits thereof;

With the understanding that any contract resulting from the proposals taken herein shall be governed, construed and enforced according to the laws of the State of Tennessee. All actions whether sounding in contract or in tort, relating to the validity, construction, interpretation, and enforcement of this contract shall be instituted and litigated in the courts of the State of Tennessee located in Hamilton County, Tennessee, and in no other. In accordance herewith the parties to this proposal submit to the jurisdiction of the courts of the State of Tennessee, located in Hamilton County, Tennessee;

And do further declare that (I/We) have carefully examined the annexed specifications, and hereby propose to furnish the following items, and/or do the following work for the sum hereinafter set forth, VIZ:

Signed: _____

Printed: Edward L Kessler
Title: Company Officer

ATTACHMENT A

IRAN DIVESTMENT ACT CERTIFICATION

RFQ REFERENCE NUMBER: 25-0901

CONTRACTOR/CONTRACTOR

NAME: Ptarmigan Ptrails LLC

The Iran Divestment Act, Tenn. Code Ann. § 12-12-101 et. seq. requires a person that attempts to contract within the state, including a contract renewal or assumption, to certify at the time the proposal is submitted, or the contract is entered into, renewed, or assigned, that the person or the assignee is not identified on a list created pursuant to § 12-12-106.

Currently, the list is available online at the following website:
[https://www.tn.gov/content/dam/tn/generalservices/documents/cpo/library/cpo-library/public-information-library/List_of_persons_pursuant_to Tenn. Code Ann. 12-12-106 Iran Divestment Act updated with NY06-07-23.pdf](https://www.tn.gov/content/dam/tn/generalservices/documents/cpo/library/cpo-library/public-information-library/List_of_persons_pursuant_to_Tenn._Code_Ann._12-12-106_Iran_Divestment_Act_updated_with_NY06-07-23.pdf)

The contractor identified above certifies by signature below that it is not included on the list of persons created pursuant to Tenn. Code Ann. § 12-12-106 of the Iran Divestment Act.

CONTRACTOR SIGNATURE NOTICE: This certification MUST be signed by an individual with legal capacity to contractually bind the Contractor.

Edward L Kessler - Company Officer

PRINTED NAME, TITLE OF SIGNATORY

Signature _____ DATE: 10/05/2025

ATTACHMENT B

Non-Boycott of Israel Certification

RFQ REFERENCE NUMBER: 25-0901

The Contractor certifies that it is not currently engaged in, and will not for the duration of the contract, engage in a boycott of Israel as defined by Tenn. Code Ann. § 12-4-119. This provision shall not apply to contracts with a total value of less than two hundred fifty thousand dollars (\$250,000) or to contractors with less than ten (10) employees.

Signature: _

Printed Name:_ Edward L Kessler

Title:_ Company Officer

Date:_ 10/05/2025



CERTIFICATE OF LIABILITY INSURANCE

DATE (MM/DD/YYYY)

10/052025

THIS CERTIFICATE IS ISSUED AS A MATTER OF INFORMATION ONLY AND CONFERS NO RIGHTS UPON THE CERTIFICATE HOLDER. THIS CERTIFICATE DOES NOT AFFIRMATIVELY OR NEGATIVELY AMEND, EXTEND OR ALTER THE COVERAGE AFFORDED BY THE POLICIES BELOW. THIS CERTIFICATE OF INSURANCE DOES NOT CONSTITUTE A CONTRACT BETWEEN THE ISSUING INSURER(S), AUTHORIZED REPRESENTATIVE OR PRODUCER, AND THE CERTIFICATE HOLDER.

IMPORTANT: If the certificate holder is an **ADDITIONAL INSURED**, the policy(ies) must have **ADDITIONAL INSURED** provisions or be endorsed. If **SUBROGATION IS WAIVED**, subject to the terms and conditions of the policy, certain policies may require an endorsement. A statement on this certificate does not confer rights to the certificate holder in lieu of such endorsement(s).

PRODUCER Granite Insurance 56 North Main Street Granite Falls NC 28630	CONTACT NAME: PHONE (A/C, No, Ext): 828-396-3342 E-MAIL ADDRESS: info@graniteinsurance.com FAX (A/C, No):
INSURED Ptarmigan Ptrails, LLC 41860 Green Dolphin Way Port Orford OR 97465	INSURER(S) AFFORDING COVERAGE INSURER A: Kinsale Ins Company INSURER B: Ohio Security Insurance Compan INSURER C: Admiral Insurance Company INSURER D: INSURER E: INSURER F:

COVERAGES**CERTIFICATE NUMBER:** 1036995323**REVISION NUMBER:**

THIS IS TO CERTIFY THAT THE POLICIES OF INSURANCE LISTED BELOW HAVE BEEN ISSUED TO THE INSURED NAMED ABOVE FOR THE POLICY PERIOD INDICATED. NOTWITHSTANDING ANY REQUIREMENT, TERM OR CONDITION OF ANY CONTRACT OR OTHER DOCUMENT WITH RESPECT TO WHICH THIS CERTIFICATE MAY BE ISSUED OR MAY PERTAIN, THE INSURANCE AFFORDED BY THE POLICIES DESCRIBED HEREIN IS SUBJECT TO ALL THE TERMS, EXCLUSIONS AND CONDITIONS OF SUCH POLICIES. LIMITS SHOWN MAY HAVE BEEN REDUCED BY PAID CLAIMS.

INSR LTR	TYPE OF INSURANCE	ADDL INSD	SUBR WVD	POLICY NUMBER	POLICY EFF (MM/DD/YYYY)	POLICY EXP (MM/DD/YYYY)	LIMITS
C	<input checked="" type="checkbox"/> COMMERCIAL GENERAL LIABILITY <input type="checkbox"/> CLAIMS-MADE <input checked="" type="checkbox"/> OCCUR GEN'L AGGREGATE LIMIT APPLIES PER: <input checked="" type="checkbox"/> POLICY <input type="checkbox"/> PRO-JECT <input type="checkbox"/> LOC OTHER:	Y	Y	CA000034372-07	5/1/2025	5/1/2026	EACH OCCURRENCE \$ 1,000,000 DAMAGE TO RENTED PREMISES (Ea occurrence) \$ 100,000 MED EXP (Any one person) \$ 5,000 PERSONAL & ADV INJURY \$ 1,000,000 GENERAL AGGREGATE \$ 2,000,000 PRODUCTS - COMP/OP AGG \$ 2,000,000 \$
B	<input type="checkbox"/> AUTOMOBILE LIABILITY <input type="checkbox"/> ANY AUTO <input type="checkbox"/> OWNED AUTOS ONLY <input checked="" type="checkbox"/> SCHEDULED AUTOS <input checked="" type="checkbox"/> HIRED AUTOS ONLY <input checked="" type="checkbox"/> NON-OWNED AUTOS ONLY			BAS69092722	5/17/2025	5/1/2026	COMBINED SINGLE LIMIT (Ea accident) \$ 1,000,000 BODILY INJURY (Per person) \$ BODILY INJURY (Per accident) \$ PROPERTY DAMAGE (Per accident) \$ \$
A	<input checked="" type="checkbox"/> UMBRELLA LIAB <input checked="" type="checkbox"/> OCCUR <input type="checkbox"/> EXCESS LIAB <input type="checkbox"/> CLAIMS-MADE DED RETENTION \$			0100238341-2	5/1/2025	5/1/2026	EACH OCCURRENCE \$ 2,000,000 AGGREGATE \$ \$
	WORKERS COMPENSATION AND EMPLOYERS' LIABILITY ANY PROPRIETOR/PARTNER/EXECUTIVE OFFICER/MEMBER EXCLUDED? (Mandatory in NH) If yes, describe under DESCRIPTION OF OPERATIONS below	Y / N	N / A				PER STATUTE OTH-ER E.L. EACH ACCIDENT \$ E.L. DISEASE - EA EMPLOYEE \$ E.L. DISEASE - POLICY LIMIT \$

DESCRIPTION OF OPERATIONS / LOCATIONS / VEHICLES (ACORD 101, Additional Remarks Schedule, may be attached if more space is required)

Certificate holder is considered additional insured in regard to the General Liability, per the terms and conditions of the policy. Waiver of Subrogation applies to the General Liability per the terms and condition of the policy. 30 day Notice of Cancellation will be provided to the holder.

Additional Insured:
Brink Fire Resources, Inc.
33319 West Lane
Creswell, OR 97426

CERTIFICATE HOLDER**CANCELLATION**

City of Red Bank
3105 Dayton Blvd
Red Bank, TN 37415

SHOULD ANY OF THE ABOVE DESCRIBED POLICIES BE CANCELLED BEFORE THE EXPIRATION DATE THEREOF, NOTICE WILL BE DELIVERED IN ACCORDANCE WITH THE POLICY PROVISIONS.

AUTHORIZED REPRESENTATIVE

© 1988-2015 ACORD CORPORATION. All rights reserved.